

Process of Becoming a HealthVault Solution Provider

This diagram summarizes the main steps of becoming a HealthVault Solution Provider. For more information, see the [Getting Started for Providers](http://msdn.microsoft.com/en-us/healthvault/cc196389.aspx) [<http://msdn.microsoft.com/en-us/healthvault/cc196389.aspx>] .

Life Cycle



Educate



Comprehend



Imp



Awareness



Learn



Design



Build

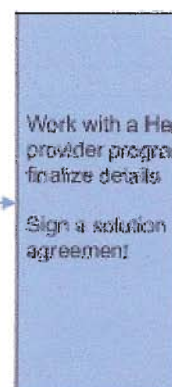
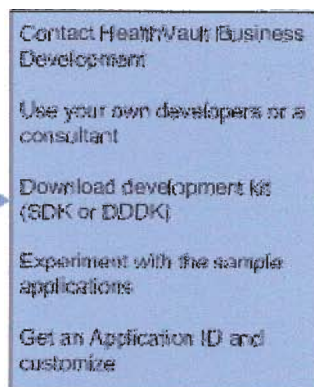
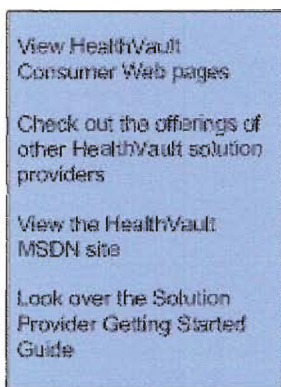


Distribute

Investigate

Develop

Fin.



The [Go-Live worksheet](http://msdn.microsoft.com/en-us/healthvault/cc197152.aspx) [<http://msdn.microsoft.com/en-us/healthvault/cc197152.aspx>] provides detailed information about the steps. You can use the [Go-Live checklist](http://msdn.microsoft.com/en-us/healthvault/cc197150.aspx) [<http://msdn.microsoft.com/en-us/healthvault/cc197150.aspx>] to check off the tasks in the process.

HealthVault Solution Provider Operating and Privacy Requirements

HealthVault solution provider agreements differ from other Microsoft solution provider agreements in one important way: HealthVault privacy requirements that are unique to HealthVault. You can view an example of the [operating and privacy requirements](http://msdn.microsoft.com/en-us/healthvault/cc268231.aspx) [<http://msdn.microsoft.com/en-us/healthvault/cc268231.aspx>] to get an idea of what is involved.



Becoming a HealthVault Solution Provider

Microsoft and its partners are connecting health communities to create positive health outcomes. Microsoft® HealthVault™ is built on control their own health information and the belief that consumers want access to online health management tools that they can trust doctor's filing cabinets.

This is a long journey. Healthcare is a big and complex issue, and no single company is going to provide a complete end-to-end solution journey with fellow pioneers in online health resources because it requires the power of many to achieve transformative impact. Our health application ecosystem to achieve our mission of connecting health communities for positive health outcomes.

HealthVault is a health application platform, a set of platform services, and a catalyst for creating an application ecosystem.

- HealthVault is a health application platform.
 - HealthVault provides a privacy-enhanced and security-enhanced foundation on which a broad ecosystem of providers can build solutions.
 - HealthVault can be used to allow consumers to store and transfer information between a variety of providers' health service solutions.
- HealthVault includes an integrated set of platform services that connect devices, PCs, and applications to HealthVault and provide a rich user experience.
 - HealthVault Connection Center provides the services to support the transfer of data from devices to HealthVault.
 - HealthVault Search is a Web search service that lets users discover and learn about health topics and store the information in their HealthVault accounts.

The [HealthVault Fact Sheet](http://msdn.microsoft.com/en-us/healthvault/cc196390.aspx) [<http://msdn.microsoft.com/en-us/healthvault/cc196390.aspx>] provides additional information.

Why Become a HealthVault Solution Provider?

Becoming a HealthVault Solution Provider provides you with access to key benefits:

Leverage the storage platform and connectivity services

HealthVault provides a set of services that solution providers can use to more rapidly build and scale their applications. By building an application on the HealthVault platform, solution providers can benefit from the storage services of Microsoft. Our storage services provide access-control and security that we scale as needed.

For devices, developers can write custom drivers to interact with HealthVault. The device drivers share a common interface through Windows HealthVault Search is a vertical health search tool designed to work with the platform. The search services can be used to provide search capabilities to applications, allowing consumers, for example, to do in-context searches on health terms.

Create new business opportunities

The ability to work with aggregated data enables a whole new set of consumer health applications to be built. Developers can build applications that can bring together lab values, device data, and medication information that can help patients and caregivers better manage their health.

Bring increased traffic and visibility

All applications created by HealthVault solution providers are listed in the HealthVault Program Directory. They may also be placed in sponsored results, helping individuals discover your applications when they are searching on relevant topics.

Consumer benefits

- **Data liquidity:** Your users control any data that they upload to HealthVault from your application, and can then share it with their caregivers. They can also use this data in other HealthVault-compatible applications, enriching their end-to-end experience.
- **Device connectivity:** A growing number of HealthVault-enabled health and fitness devices means that device data can be uploaded to your application with HealthVault, you can enable users to interact with their device data using your application as the interface.



Meta
Self
[Add record](#)

Warning: This is a development and test environment. Do not store personal information.
This is not the public Microsoft HealthVault site, and the HealthVault privacy statement does not apply here. Do not enter any personal information when creating accounts or records or when using applications on this site. Enter test data only. [Click here to go to the public HealthVault site.](#)

Use this record

Common tasks

- [Add, view or edit information](#)
- [Upload a file](#)
- [Share with someone else](#)
- [View and update profile](#)
- [See complete history](#)

Most recent changes

- 3/28/2009 [Basic Demographic Information](#)
- 3/28/2009 [Personal Demographic Information](#)
- 3/28/2009 [Personal Contact Information](#)

Use this record's health sites

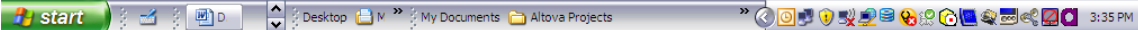
You can use other Web sites to add information to your HealthVault record and use it to help you manage your health.

[See health sites that work with HealthVault](#)

See health devices

You can use personal health devices to monitor your health and fitness and add information to your HealthVault record.

[See personal health devices that work with HealthVault](#)



Warning: This is a development and test environment. Do not store personal information.
This is not the public Microsoft HealthVault site, and the HealthVault privacy statement does not apply here. Do not enter any personal information when creating accounts or records or when using applications on this site. Enter test data only. [Click here to go to the public HealthVault site.](#)

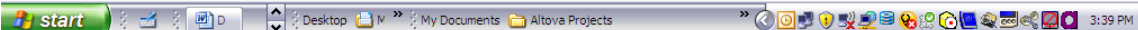
Choose a Health Record

[Add a new record](#)



Meta
Self
Access:
Custodian ?
[Edit profile](#)

[Update your account profile](#)



Microsoft HealthVault BETA Welcome, [Meta Steward](#) | [Sign out](#) | [Help](#)

Home Records **Health info** Sharing History

Warning: This is a development and test environment. Do not store personal information.

This is not the public Microsoft HealthVault site, and the HealthVault privacy statement does not apply here. Do not enter any personal information when creating accounts or records or when using applications on this site. Enter test data only. [Click here to go to the public HealthVault site.](#)

Meta
Self
[Add record](#)

Add, view or edit information

See items in this record

All items	Personal Contact Information
Basic Demographic Information	Personal Demographic Information

Add new items to this record

Allergy	Height Measurement
Blood Glucose Measurement	Immunization
Blood Pressure Measurement	Lab Test Results
Condition	Medication
Continuity of Care Document (CCD)	Peak Flow Measurement
Continuity of Care Record (CCR)	Procedure
Documents (File)	Weight Measurement
Emergency or Provider Contact	
Family History	

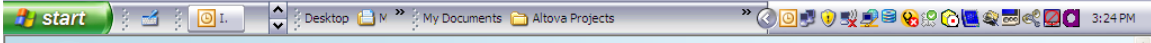
Upload a file to this record

File path

Maximum file size: 3.5MB

Description (optional)

Read the [HealthVault Code of Conduct](#) before you upload files.



Microsoft HealthVault BETA Welcome, [Meta Steward](#) | [Sign out](#) | [Help](#)

Home Records Health info **Sharing** History

Warning: This is a development and test environment. Do not store personal information.

This is not the public Microsoft HealthVault site, and the HealthVault privacy statement does not apply here. Do not enter any personal information when creating accounts or records or when using applications on this site. Enter test data only. [Click here to go to the public HealthVault site.](#)

Meta
Self
[Add record](#)

Sharing your information

You've authorized the following to view or change information in your record. You can change their access or see changes they've made.


<p>People</p> <p>Send a new sharing invitation</p>	<p>Applications</p> <p>See the HealthVault Application Directory</p>
---------------------------------------------------------------------------	---------------------------------------------------------------------------------------------


Meta Steward
Access granted: Custodian
[Change access](#) | [View history](#)

© 2009 Microsoft | [Privacy](#) | [Legal](#) | [Code of Conduct](#) [About HealthVault](#) | [Help](#) | [Feedback](#) **Microsoft**



Home Records Health info Sharing **History**

 **Warning: This is a development and test environment. Do not store personal information.**
This is not the public Microsoft HealthVault site, and the HealthVault privacy statement does not apply here. Do not enter any personal information when creating accounts or records or when using applications on this site. Enter test data only. [Click here to go to the public HealthVault site.](#)


Meta
Self
[Add record](#)

What history do you want to see?

Changes based on when they were made

- [All changes in the last 30 days](#)
- [All changes in the last 6 months](#)

A different time period

Changes made by a specific person or account

- [Meta Steward](#)

Changes made using a specific program

- [Microsoft Health Explorer](#)

Changes made to this record's profile or access permissions

- [Miscellaneous changes to Meta's record](#)

start Desktop My Documents Altova Projects 3:43 PM